



**KERNLOCHBOHRER**<sup>®</sup>  
PROFESSIONAL POWER TOOLS



## Operating instructions

### Water tank WT-35/P-PRO

---

Kernlochbohrer GmbH  
Geigersbühlweg 52  
72663 Großbettingen  
Phone: 07022-5034900  
Email: [info@kernlochbohrer.com](mailto:info@kernlochbohrer.com)

Version 1 2. Output 05/2023

# Content

Introduction	3
About this guide	3
Note	3
Explanation of symbols	4
Safety regulations	4
Before commissioning	7
Using the water tank	7
Battery level indicator	8
Transport	8
Cleaning and storage	8
Technical data	9
Troubleshooting	10
Environmental protection	11
Warranty	11
Exploded view	12
EC Declaration of Conformity	14

# Introduction

Thank you for choosing the WT-35/P-PRO water tank from Kernlochbohrer GmbH. This is a high-quality product based on state-of-the-art technology. We hope that this device is to your satisfaction and meets your expectations. We are constantly striving to improve our products in our product segment and will continue to supply the market with new equipment.

Our company declines all responsibility in the event of violations of the operating instructions that may lead to injuries or machine damage. In addition, all currently applicable regulations of the Accident Prevention Regulations (UVV) and the Employer's Liability Insurance Association (BG) must be observed.

## About this guide

These operating instructions are for the model  
WT-35/P-PRO

Check the machine model against the type plate.



## Note

Read the entire instruction manual carefully before using the water tank. Special attention should be paid to the section "Safety precautions".

Kernlochbohrer GmbH reserves the right to change the design and appearance of the products and their operating instructions. Future changes to the operating instructions will be made without prior notice.

# Explanation of symbols



Warning of general danger. Failure to observe these safety precautions and instructions may result in electric shock, fire and/or serious injury.

## Safety regulations

- ❖ Read all precautions before commissioning and keep the operating instructions.
  - ❖ Please follow the operating instructions carefully, as failure to observe these safety precautions and instructions may cause electric shock, fire and/or serious injury.
1. Always check the charging cable and plug before recharging the battery. Only have damage repaired by a specialist.
  2. Only insert the plug into the socket when the water tank is switched off.
  3. Do not use this tank to store flammable chemicals.
  4. Always place the water tank on a flat, level floor and ensure that a strainer is used when filling.
  5. Never point the tank hose at a person or animal, whether the tank is switched on or not.
  6. This appliance is not intended for use by persons (including children) with reduced physical, sensory or mental capabilities, or lack of experience and/or knowledge, unless they have been given supervision or instruction concerning use of the appliance by a person responsible for their safety. Children should be supervised to ensure that they do not play with the appliance.

7. If the mains connector is damaged, the unit must no longer be charged.
8. Please ensure that the mains connection cable is not damaged by being driven over, squeezed, tugged and the like.
9. Couplings of mains connection or appliance connection cables must be at least splash-proof.
10. The unit must be connected to a line protected by a circuit breaker or a fuse with the minimum current rating of 16A.
11. Do not operate the unit including accessories if: the unit shows visible damage (cracks/breaks), the mains connection cable is defective or shows cracks or ageing, there is suspicion of an invisible defect (after a fall).
12. No liability is accepted for any damage caused by misuse, improper operation or improper repair.
13. There is a risk of electric shock if the appliance earth conductor is not connected properly. Contact a certified electrician according to VDE or our customer service if you are in doubt whether the socket is properly earthed. Do not modify the plug supplied with the appliance. If it does not fit into the socket. Have a suitable socket installed by a certified electrician according to VDE.
14. Note that the voltage must not exceed +/-5% of the nominal voltage. Higher voltages can cause irreparable damage. Note that higher voltage peaks are not generated when charging the water tank via a generator.
15. Do not charge the battery with a damaged charging cable or plug. If the charger is not working properly, has been dropped or damaged, is outdoors or has fallen into water. Make sure it is repaired by a qualified person.

16. Do not pull or carry the cable, use the cable as a handle, close a door on the cable or pull the cable around sharp edges or corners. Do not run over the cable. Keep the cable away from hot surfaces.
17. Do not pull the plug out of the socket by the cable. Do not hold the plug by the cable to unplug it.
18. Do not handle the charging plug or the unit with wet hands.
19. Check the cable and plug regularly for damage. If the charging cable is damaged, it must be replaced by a certified electrician according to VDE to avoid danger.
20. Do not expose the water tank to precipitation.
21. Only allow trained personnel to operate the water tank.
22. Only use original spare parts and accessories for maintenance and repair.
23. Charge the accumulators in a dry and well-ventilated room. Escaping gases can ignite in a confined space. Therefore, do not cover the ventilation when charging.
24. Switch off the unit and disconnect the battery terminals before maintenance or repair.
25. The installed motors and moving parts can cause injuries.
26. Battery acid can cause injuries to skin and eyes. Wear appropriate protective clothing when handling the battery.
27. Keep electrical parts away from moisture.
28. Make sure that the main switch is in the "OFF" position before filling the water tank.
29. Only use the machine when you are in full possession of your faculties.

## **Before commissioning**

### **THE BATTERY MUST BE CHARGED 12 HOURS BEFORE FIRST USE!**

It is important that you connect the battery correctly. Make sure that there is no confusion here. Connect the red wire to the anode (+) and the black wire to the cathode (-).

Fully charge the battery before or after each use. If the pointer points to the yellow grid area, the battery must be recharged.

Charging the battery before it is completely discharged will not affect its life.

A completely discharged battery requires more than 10 hours of charging. At first the charging indicator will show green, after more than 10 minutes of charging the light will change to red, indicating that the battery is being charged. Once the battery is fully charged, it will change back to green.

## **Using the water tank**

Place the tank on a level surface when filling.

Install the outlet strainer and the inlet strainer in the correct position to protect the pump and the nozzles from being clogged by impurities. Any impurities in the pump can cause the water tank not to function properly.

The desired flow rate can be set on the valve to the desired range depending on the contents of the water tank. We recommend reducing the water flow rate to a minimum here. The lower the flow rate, the lower the power requirement, which means that the battery can be used for a longer time. A high flow rate results in a higher power requirement and thus reduces the battery's period of use before it has to be recharged.

After filling the tank, tighten the cap on the filler neck clockwise. If you spill anything during filling, wipe the tank with a cloth.



## Battery level indicator

If the water tank's battery is low on power, the flow decreases, which means the battery needs to be recharged.

## Transport

When transporting your tank, make sure that the electricity is switched off. Always place the tank in an upright position, protect the hose from sharp objects and never transport your tank with harmful chemicals in it.

## Cleaning and storage

After using the water tank, switch off the pump, fill some clean water into the tank. Switch on the pump, let the pump run until the tank is empty. Make sure the pump, hose and strainer are completely clean. Store your tank in a cool place.



Make sure that the battery is fully charged after each use.

Keep the tank in a cool place that is inaccessible to children.

If you place the tank in a cold environment, you must empty all liquids in the tank.

## Technical data

Capacity	35L	
Battery	12V/17AH (Fuse:6A) Maintenance free battery	
Charger	Input 230V/50HZ	Automatic Saturation
	Output 12V/200MΩ	
Pump	Pump model: FLO-2202A 12V2.6A	
	Flow rate: 4.0L/min. Pressure switch cut-off at 4.8bar	
Flow rate	5 levels adjustable	
Display	Charge level indicator	
Hose	6 metre outlet pressure hose	
Tyres	Inflatable tyre, dimension: 8" Pressure: 3.0BAR	
Weight	G.W: 22kg; N.W: 19kg	
Dimension	43.5 x 36 x 89cm	

# Troubleshooting

Problem	Cause	Solution
The pump does not run although the unit is switched on.	The power supply was disconnected.	Reconnect the battery cable.
	Battery is empty	Charge the battery.
	Damaged power switch	Replace the power switch
The pump makes very loud noises.	Loose screws	Tighten the screws.
The pump is leaking.	The pump hose connection has come loose or is broken.	Check the pump hose connection, reattach the clamps or replace defective parts.
Pumps start again and again	Clutch clogged	Clean the coupling.
	Coupling or O-ring defective	Replace coupling or O-ring.
	Gasket incorrectly installed	Insert the seal in the correct position.
	Strainer clogged	Clean the sieve completely.
	The hose has come loose from the unit.	Reinstall the hose on the machine.
	Weak battery	Charge the battery or replace the battery.
Pumps start again and again	Clutch clogged	Check the coupling, clean or replace it.
	Loose or worn water hose	Tighten the tube clip and nut.
	Small parts in the valve	Clean the valve thoroughly.
	Too little flow at the coupling	Adjust the flow rate.

# **Environmental protection**

## **Raw material recovery instead of waste disposal!**

To avoid transport damage, the unit must be delivered in sturdy packaging. Packaging as well as the unit and accessories are made of recyclable materials.

The plastic parts of the unit are labelled according to the material. This enables environmentally friendly, sorted disposal via the collection facilities offered.

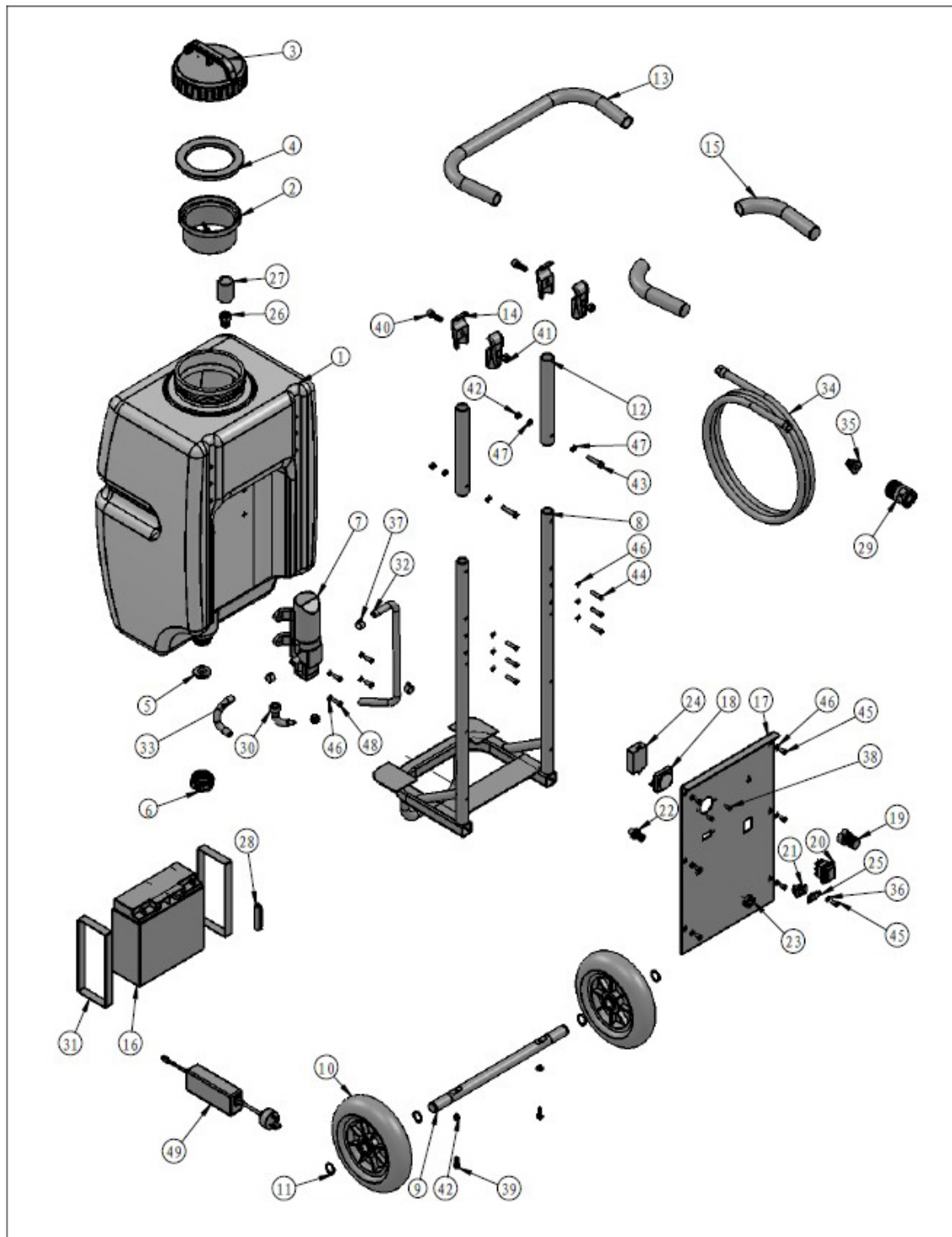
### Only for EU countries

Do not throw power tools in the household waste! According to the European Directive 2012/19/EU on waste electrical and electronic equipment and its implementation in national law, used power tools must be collected separately and recycled in an environmentally sound manner.

## **Warranty**

In accordance with our general terms and conditions of delivery, a warranty period of 12 months applies for material defects in business transactions with companies (proof by invoice or delivery note). Damage caused by natural wear and tear, overloading or improper handling shall remain excluded from this. Damage caused by material or manufacturer defects shall be remedied free of charge by repair or replacement. Complaints can only be accepted if the device is sent to the supplier unassembled.

# Exploded view



No.	Item no.	Designation	Number
1	11E40101	Tank	1
2	11E40102	Inlet filter	1
3	11E40103	Cover	1
4	11E40104	Cover gasket	1
5	11E40105	Outlet seal	1
6	11E40106	Outlet cover	1
7	11E40107	Pump	1
8	11E40108	Car	1
9	11E40109	Axis	1
10	11E40110	Wheel 200*50	2
11	11E40111	Circlip	4
12	11E40112	Setting	2
13	11E40113	Handle	1
14	11E40114	Pipe connector	4
15	11E40115	Rubber cover	2
16	11E40116	Battery	1
17	11E40117	Steel plate	1
18	11E40118	Measuring device	1
19	11E40119	Setting switch	1
20	11E40120	Mains switch	1
21	11E40121	Charging socket	1
22	11E40122	Hose connector	1
23	11E40123	Nut M14	1
24	11E40124	Potentiometer	1
25	11E40125	Protective cap	1
26	11E40126	Outlet	1
27	11E40127	Output filter	1
28	11E40128	Fuse 250V 6A	1
29	11E40129	Gardena connection	1
30	11E40130	Plastic angle	1
31	11E40131	Battery holder	2
32	11E40132	Pipe (tank)	1
33	11E40133	Pipe (outlet)	1
34	11E40134	Hookah	1

35	11E40135	Gardena adapter	1
36	11E40136	Seal	1
37	11E40137	Schlauch tauchen	4
38	11E40138	Cross screw M3.5*16	2
39	11E40139	Cylinder head screw M8*16	2
40	11E40140	Cylinder head screw M8*25	2
41	11E40141	Nut M8	2
42	11E40142	Nut M8	4
43	11E40143	Hexagon head screw M8*35	2
44	11E40144	Hexagon head screw M5*25	6
45	11E40145	Cross screw M5*12	7
46	11E40146	Washer $\Phi$ 5mm	12
47	11E40147	Washer $\Phi$ 6mm	4
48	11E40148	Phillips screw M5*16	4
49	11E40149	Charger	1

# EC Declaration of Conformity

The manufacturer/marketer  
Kernlochbohrer GmbH  
Geigersbühlweg 52  
72663 Großbettlingen  
hereby declares that the following product

Product name: Water tank  
Typ: WT-35/P-PRO

complies with all relevant provisions of the applied legal regulations (hereinafter) - including their amendments in force at the time of the declaration. The sole responsibility for issuing this declaration of conformity lies with the manufacturer. This declaration relates only to the machine in the condition in which it was placed on the market; parts and/or interventions subsequently fitted by the end user are not taken into account.

The following legislation was applied:  
EMV-Richtlinie 2014/35/EU

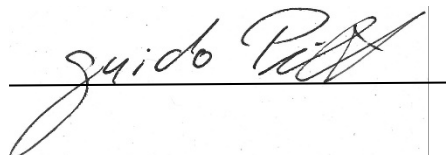
The following harmonised standards were applied:

EN 60204-1:2006+A1:2009	Safety of machinery - Electrical equipment of machines - Part 1: General requirements Part 1: General requirements
EN ISO 19932-1:2013	Plant protection equipment - Portable equipment Part 1: Safety and environmental requirements Requirements

Name and address of the person authorised to compile the technical file:

Kernlochbohrer GmbH  
Geigersbühlweg 52  
72663 Großbettlingen

Location: Großbettlingen  
Date: 17.05.2023

  
\_\_\_\_\_  
Guido Pillat, Chief Executive